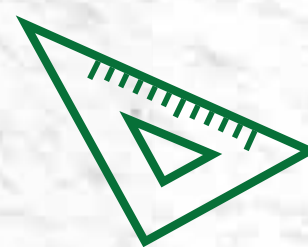
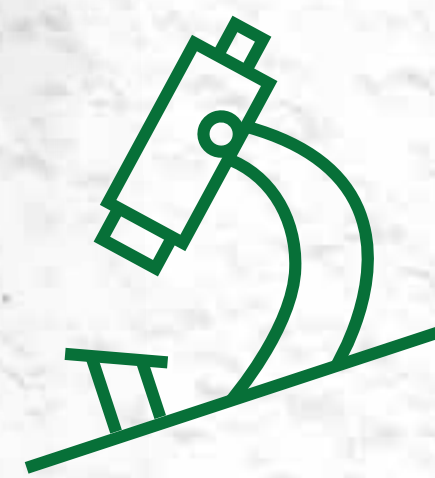


HOW NESTLÉ NESPRAY MILK POWDER IS MADE FORTIGROW



A FUNDA NE

NESPRAY STORY

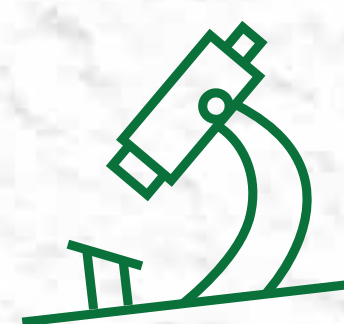
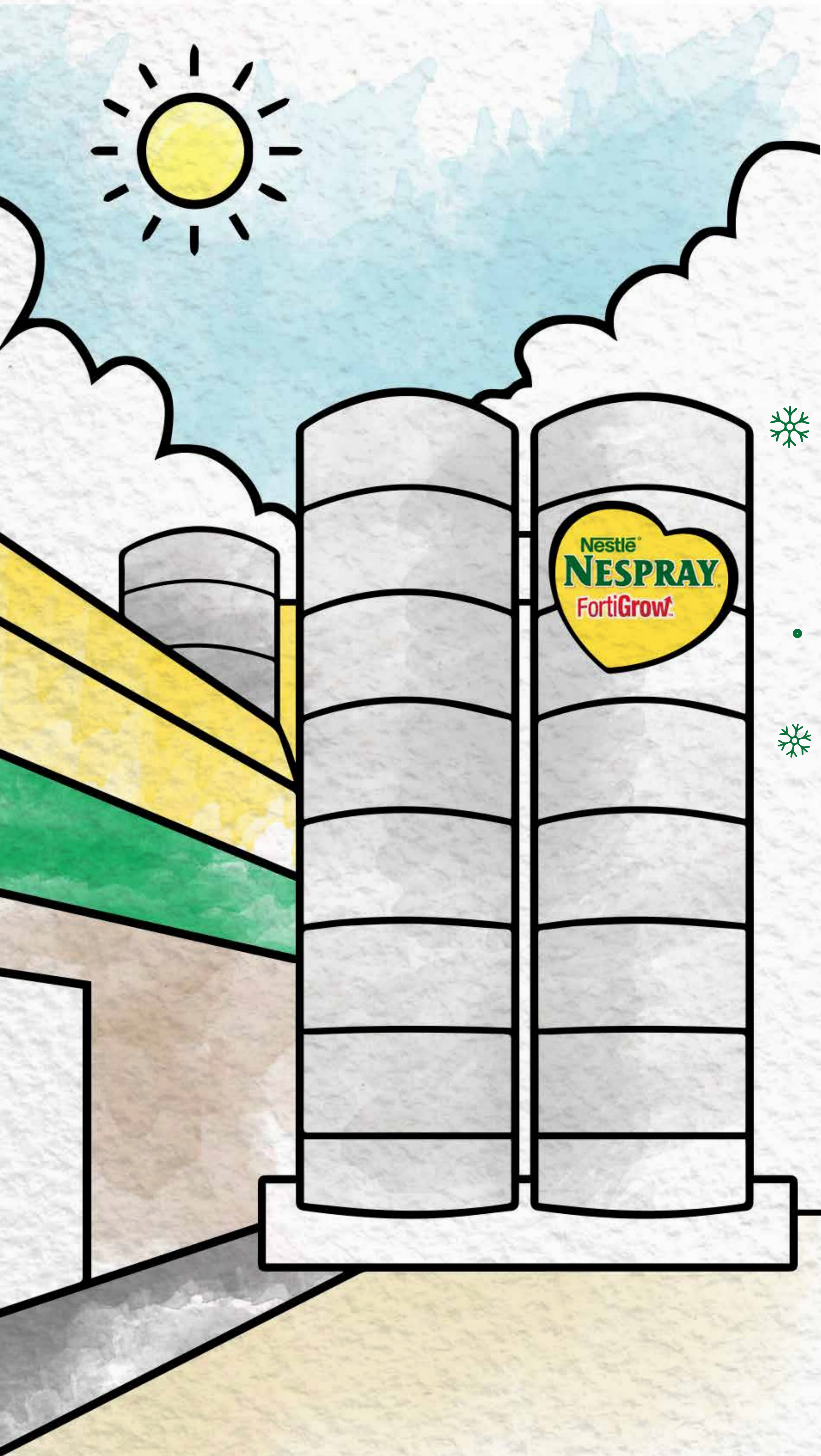


NESTLÉ NESPRAY FORTIGROW
MILK POWDER IS SPECIAL.

WHY, YOU ASK?

HAVE YOU EVER
WONDERED HOW
IT'S MADE?





IT HAS BEEN SPECIALLY MADE BY
CLEVER SCIENTISTS TO HAVE ALL THE
VITAMINS AND MINERALS CHILDREN
NEED TO GET THEIR BODIES AND
MINDS READY FOR SCHOOL.



IT'S POWDERED,
BUT IT'S STILL
MORE THAN JUST MILK.



THE NESTLÉ NESPRAY FACTORY GETS
320 TONNES OF MILK
DELIVERED EVERY DAY.

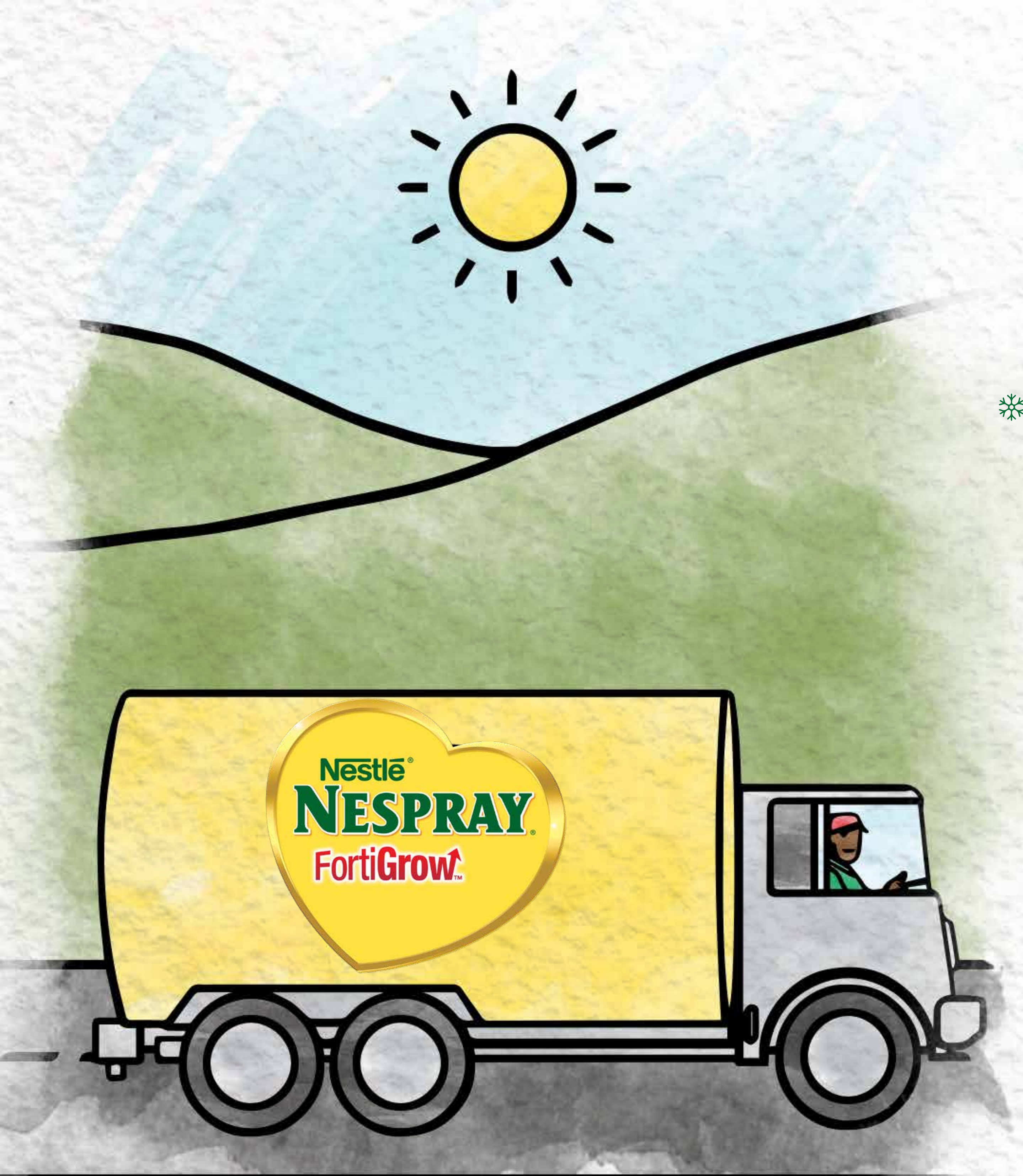
THAT'S THE SAME
WEIGHT AS
60 ELEPHANTS!



z

IMAGINE THE JUG
THAT HAS TO HOLD
ALL THAT MILK!





MILK COMES FROM ALL
OVER THE WESTERN
CAPE, SUCH AS FROM
FARMS IN GEORGE AND
JAKAALSKRAAL. AS SOON
AS THE MILK ARRIVES,
IT IS TESTED BY MANDLA
IN THE LABORATORY.





HE HAS A VERY IMPORTANT JOB



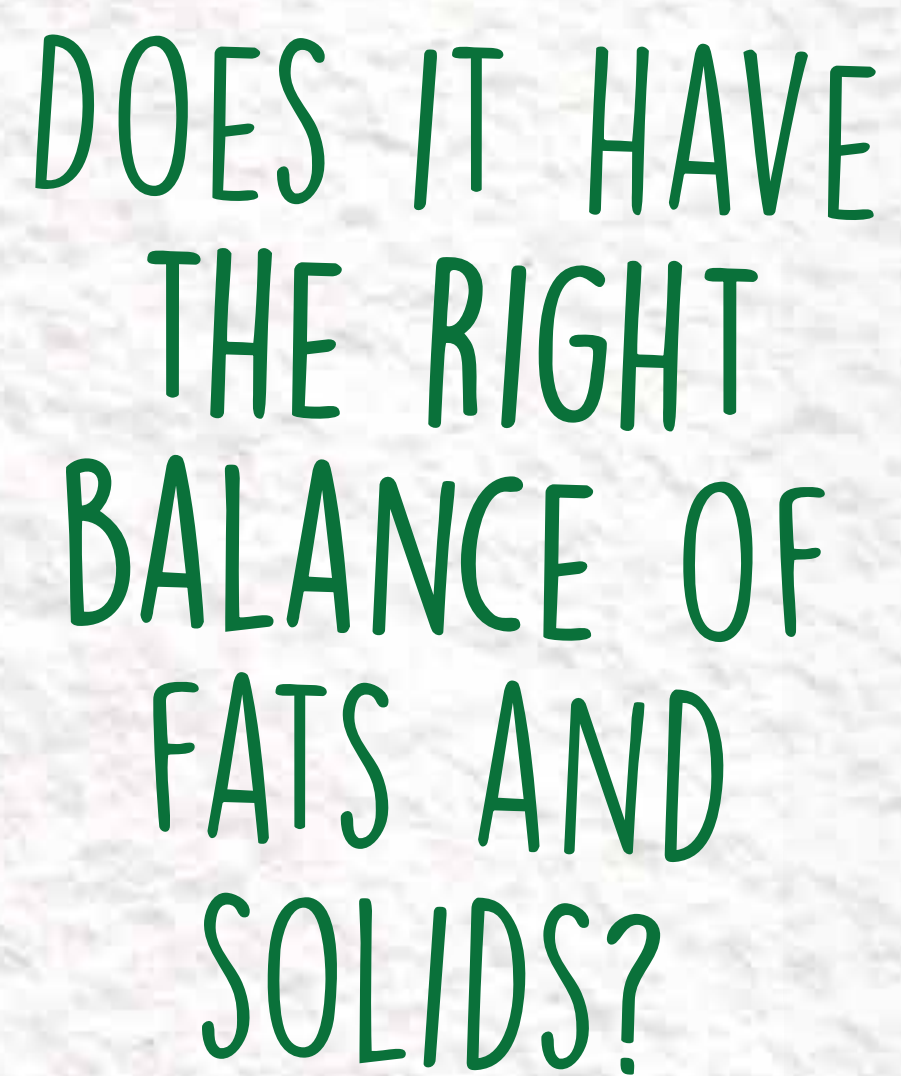
HE TESTS FOR ALL TYPES OF IMPORTANT THINGS.



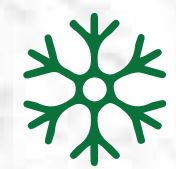
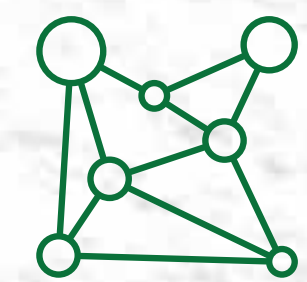
IS THE MILK FRESH?

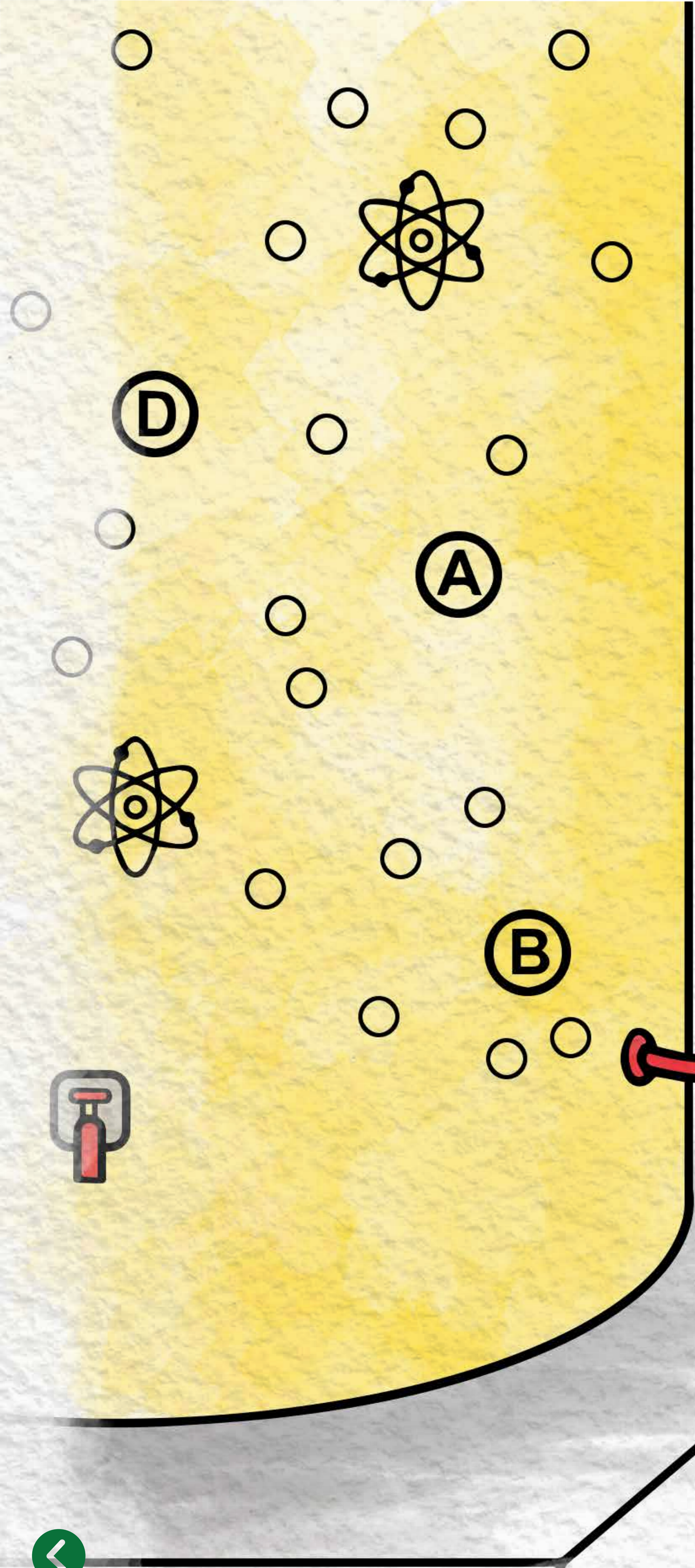


IS IT THE CREAMIEST IT CAN BE?



DOES IT HAVE THE RIGHT BALANCE OF FATS AND SOLIDS?





THE MILK IS THEN PUMPED INTO LARGE TANKS WHERE VITAMINS AND MINERALS ARE ADDED TO PROVIDE SCHOOL GOING KIDS WITH THE NUTRIENTS THEY NEED TO SUPPORT THEIR BRAIN.

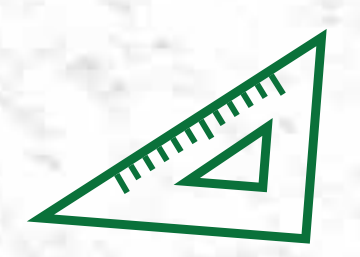
B VITAMINS AND IRON TO HELP SUPPORT NORMAL LEARNING.



9

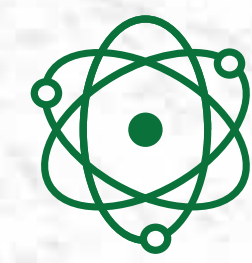
x

2





VITAMIN D AND
CALCIUM TO SUPPORT
NORMAL GROWTH.



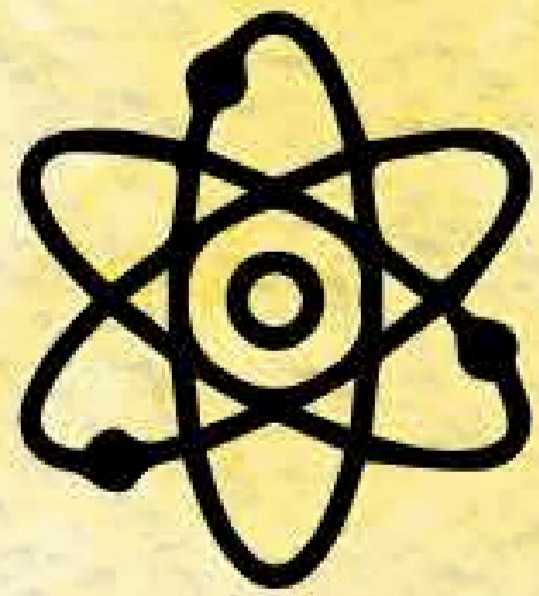
AND FINALLY, ZINC,
VITAMINS A AND C AND
SELENIUM TO SUPPORT
NORMAL FUNCTIONING OF
YOUR IMMUNE SYSTEM.

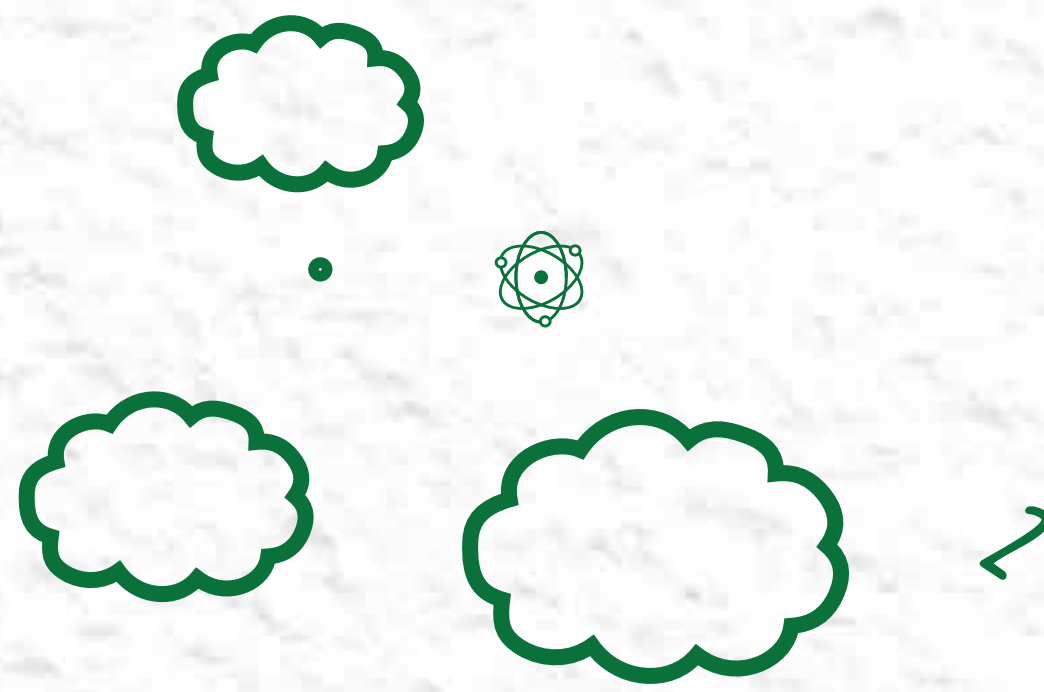


D

A

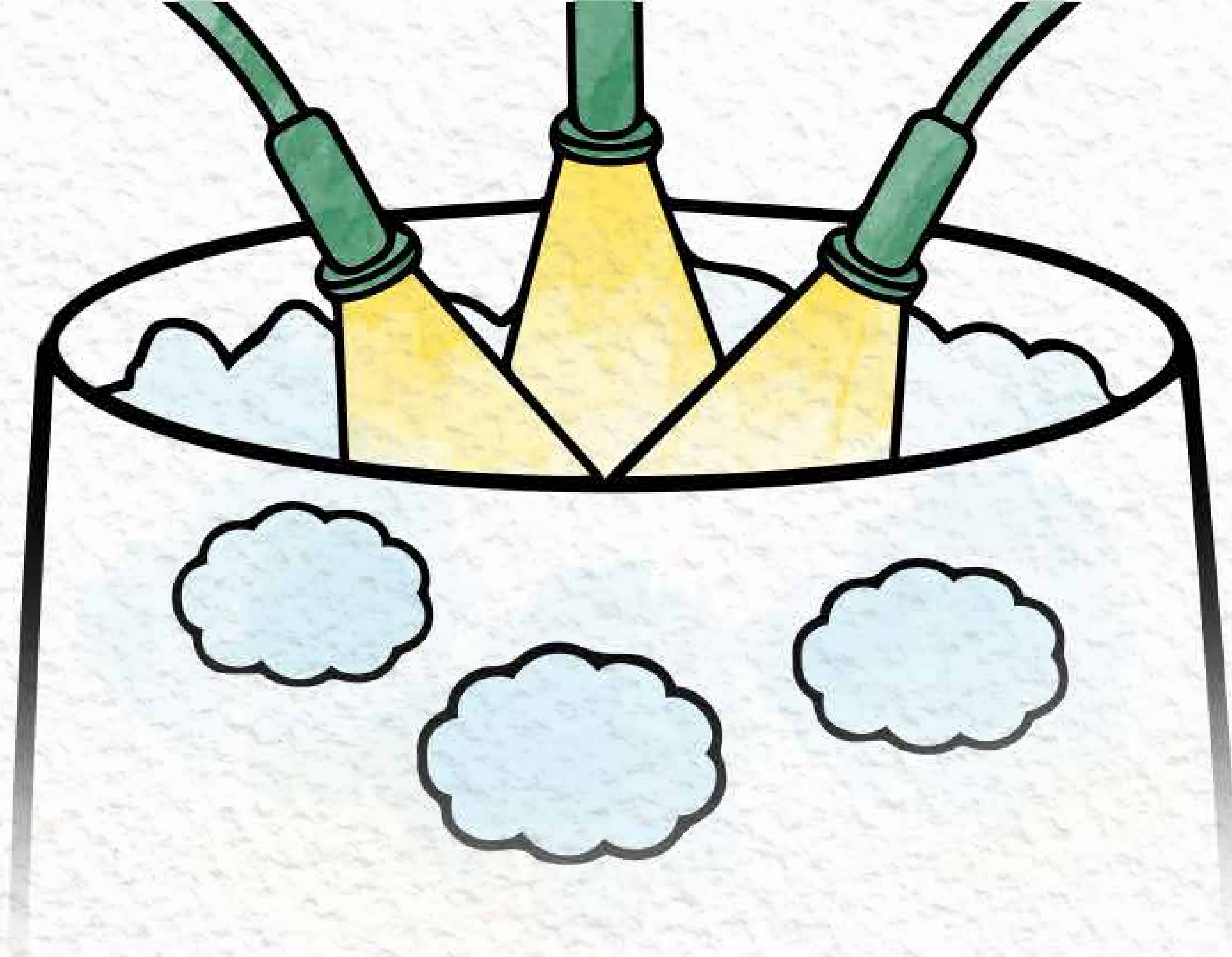
B





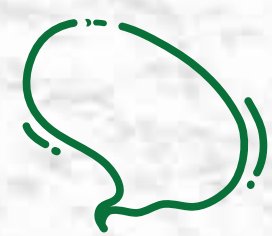
THE NEXT PART IS WHERE THE MAGIC HAPPENS!
THE MILK IS FIRST CONCENTRATED IN A MACHINE
THAT WORKS UNDER A VACUUM, CALLED

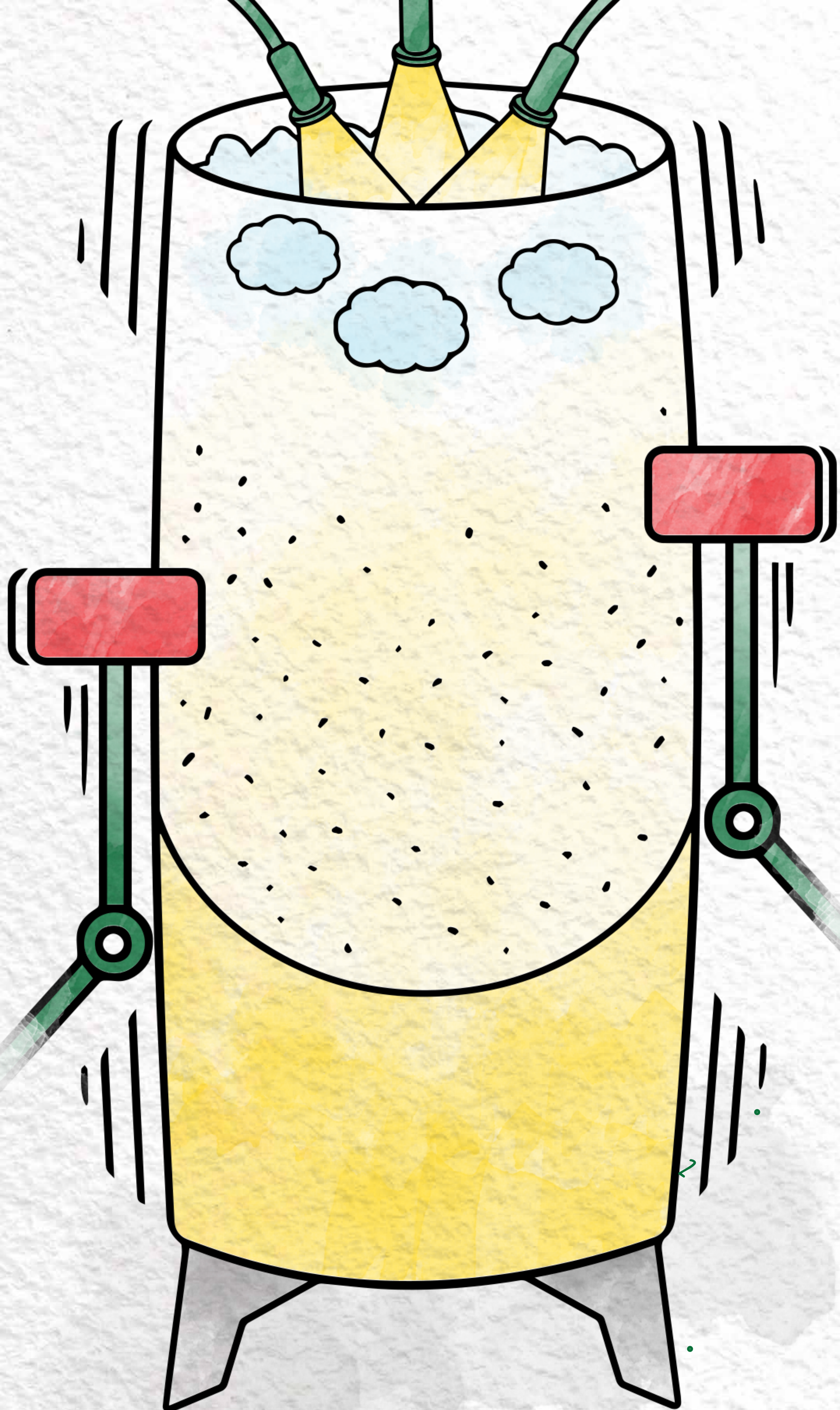




THEN THE CONCENTRATED MILK IS SPRAYED INTO A HUGE TOWER FILLED WITH HOT AIR. THE AIR IS SO HOT THAT NO HUMAN CAN GO NEAR IT.

YOH, KUSHUSHU!





NOW, ONLY MILK POWDER IS LEFT. TO HELP THE POWDER FALL DOWN TO THE BOTTOM, THREE VERY LARGE HAMMERS HIT THE SIDE OF THE TOWER. THE NOISE IS VERY, VERY LOUD

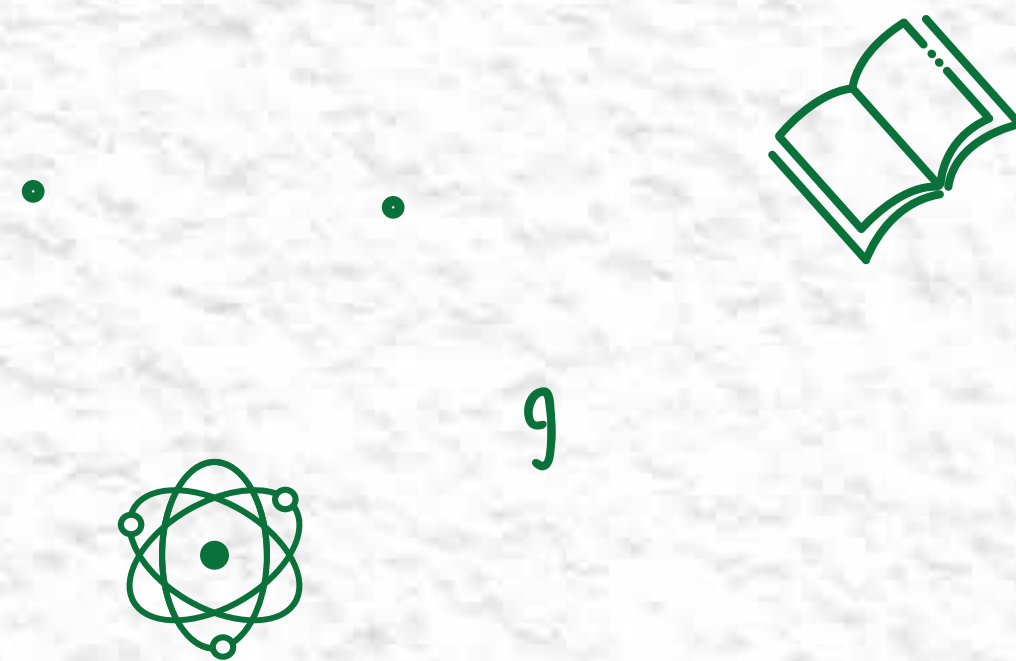


INDLEBE ZAM!





BEFORE THE POWDER IS PACKED, THE SCIENTIST TESTS IF THE POWDER DISSOLVES IN WATER. NOW IT IS READY TO BE PUT INTO THE BEAUTIFUL YELLOW NESTLÉ NESPRAY FORTIGROW PACKETS AND TINS THAT WE USE IN OUR HOMES.



AND THAT IS HOW NESTLÉ NESPRAY
FORTIGROW POWDERED MILK IS MADE.

IT'S MORE THAN
JUST MILK!

THE END.

 NESPRAY SOUTH AFRICA

@ NESPRAYZA



9



X

